

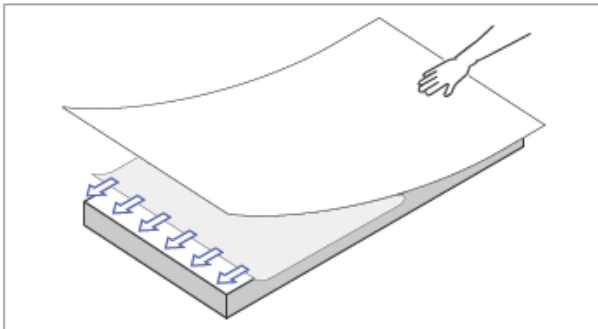
## Technical data sheet

### Zemdrain® MD self-adhesive

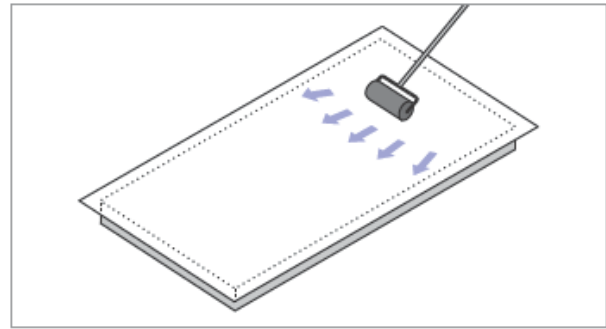
Zemdrain® MD self-adhesive is an addition to the range of Zemdrain® controlled permeability formwork liners which includes Zemdrain® Classic and MD.

Zemdrain® MD self-adhesive can be used with all formwork but is particularly suited for special applications:

- for steel or plastic faced forms where stapling is very difficult or impossible
- for formwork with specific geometrical shapes
- for aesthetic concrete where staple marks are unacceptable
- for small-sized formwork panels



Keep material square on the form, remove protective backing, gently press the liner against the form



Firmly fix in position by applying a uniform pressure to the surface using a special roller

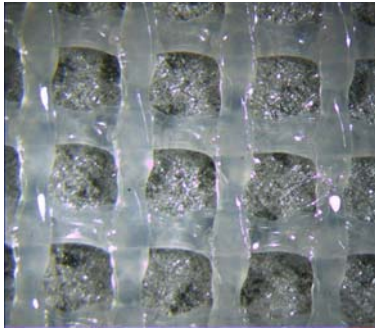
### Concrete surface quality

Precise, computer-controlled application of the PSA-glue\* on the rear side of the formliner ensures that water draining channels in the grid remain unimpeded. The glued surface is covered with a protective backing, which is simply removed prior to the application; the formliner can thus simply be glued to the formwork.

During concreting water and air are drained as usual. Using the well proven Zemdrain® formliner, the usual surface concrete quality will thus be produced.

### Product properties of Zemdrain® MD self-adhesive:

- Zemdrain® MD self-adhesive is manufactured from polypropylene
- Upper surface (concrete face): smooth to slightly textured filter fabric (PP)
- Rear side (formwork face): with special grid (PP) and adhesive
- Adhesive type: PSA (\*Pressure Sensitive Adhesive) made of thermoplastic polymers
- Separating film: LDPE, with silicone coating on one side
- Roll size: 2.5m wide x 35 m long
- Multiple use: 2-3 times possible dependent upon handling, etc.
- High water/air storage volume, thus also suited for inclined and horizontal surfaces



Grid structure (rear side)  
after adhesive application



Zemdrain® MD self-adhesive fixed  
to the formwork



Concrete surface produced with  
Zemdrain® MD self-adhesive.

### Quality convinces!

The general requirements of the “Technical application guidelines for Zemdrain®” (version dated June 2008) remain applicable for Zemdrain® MD self-adhesive. However, instructions relating to tensioning and fixing using staples are now superseded by the fixing instructions applicable only for Zemdrain® MD self-adhesive.

All test reports and safety data sheets issued for Zemdrain® MD also apply for the formliner Zemdrain® MD self-adhesive (except for test reports and safety data sheets for drinking water applications). Copies of these documents are available free-of-charge upon request.

**Prior to using Zemdrain® MD self-adhesive please clarify all technical details with our sales representatives or our technical advisory department: Phone +49 9427 189-189 or send an e-mail to [technik@maxfrank.de](mailto:technik@maxfrank.de)**

Zemdrain® is DuPont's registered trademark. [www.zemdrain.com](http://www.zemdrain.com)