

FRANK | stremaform





**The material:**

The supporting construction is a special steel mesh. During production an expanded metal mesh 16/6/1/1 mm is welded in between. The result is a deflection resistant construction. According to tests carried out by the Technical University of Brunswick, the resistance of these construction joints to shear forces is identical to the values obtained with monolithic concrete. When using Stremaform for bucket concrete foundations the transferable shear forces are approximately 37% higher than with traditional indented joints to DIN 1045-1.

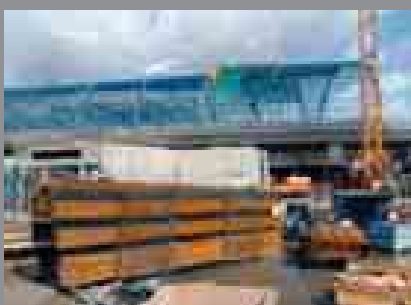
- Stremaform is dimensionally stable and designed to withstand concrete pressure during the pour.
- Installed Stremaform formwork elements remain in the concrete and can be recycled together with steel mesh.
- Stremaform mesh width can be adapted by our design department to your specific needs.

**The main application of Stremaform is for working joints in concrete and reinforced concrete elements:**

- used for working construction joints in floor slabs, ceilings and walls
- with cut-outs for reinforcement
- with a welded metal strip as a water stop
- for temporary box-outs
- with a welded in cage in which a pvc/rubber water bar can be inserted on site
- for sloping, rectangular or circular formwork
- can be used as a displacement element in the concrete

**Further applications for Stremaform formwork elements are:**

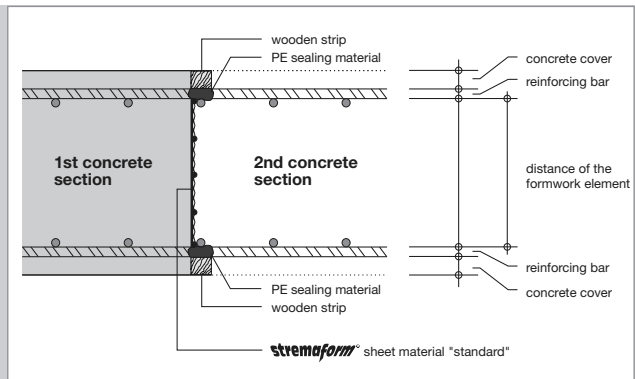
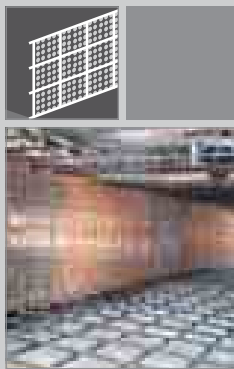
- stop ends in underwater slabs
- for control joints
- movement joints with joint separating plate and support cage for pvc/rubber water stops



**Stremaform Type 3000** Sheet material

The material is installed between the reinforcement layers.

Distance = Height of element

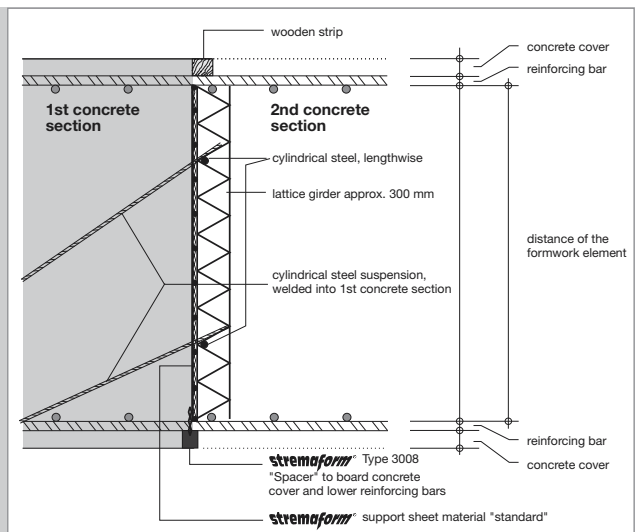
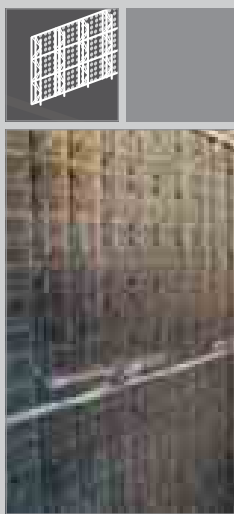


**Stremaform Type 4000** Sheet material „strong“

For floor slabs/ceilings and walls with an element thickness of  $\geq 500$  mm

Stiffening is required from this thickness on. It is available from the factory.

Distance = Height of element

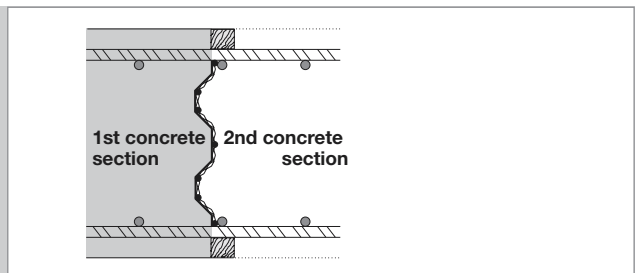
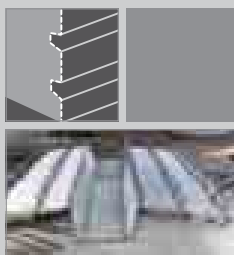
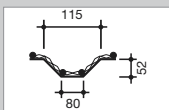


**Stremaform Type 3010** Sheet material with one or more indented joints

These elements are also available as type 4010 with a factory-made stiffening.

Distance = Height of element

Standard size of the dovetail joints.



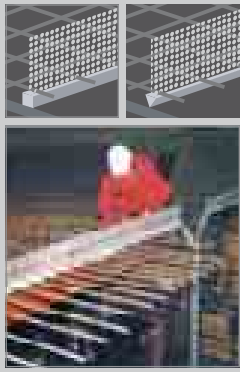
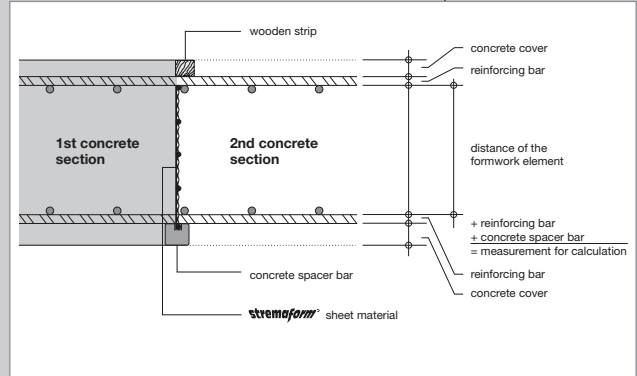
**Stremaform Type 3005** Formwork element with concrete spacer bar, one-sided

Stremaform formwork element with a triangular or square fibre concrete spacer bar, one-sided.

To form construction joint and concrete cover, one-sided.

The lower reinforcement layers pass through the expanded material.

Calculated measurement =  
Concrete spacer bar + Stremaform strip

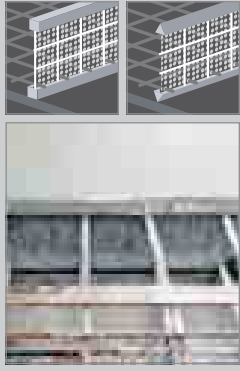
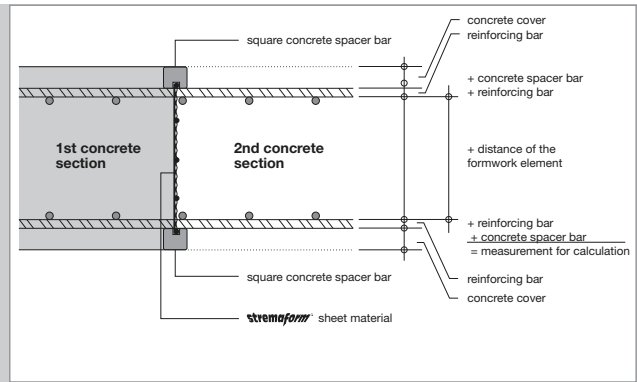
**Stremaform Type 3007** Formwork element with concrete spacer bar, double sided

Stremaform formwork element with a triangular or square fibre concrete spacer bar both sides.

To form construction joint and concrete cover, both sides.

The lower reinforcement layers pass through the expanded material.

Calculated measurement =  
2 x Concrete spacer bar + Stremaform strip


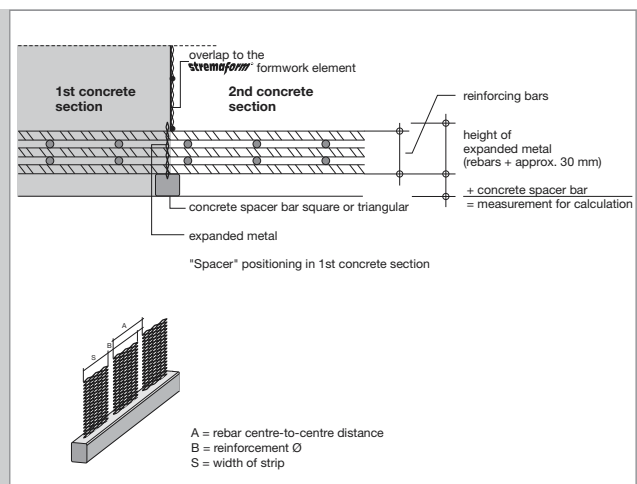
**Stremaform Type 3008 „Spacer“**  
Combined fibre concrete spacer and discontinuous stop end to allow rebar support

Stremaform formwork element with strips of expanded metal, separated at the centres of the reinforcement layers.

With a triangular or square fibre concrete bar spacer, single sided.

To form working construction joints in slabs in the area of the lower concrete cover and reinforcement layers.

Calculated measurement =  
Concrete spacer bar + Stremaform strip

**Stremaform Type 3015** Working joint stop end with metal water bar

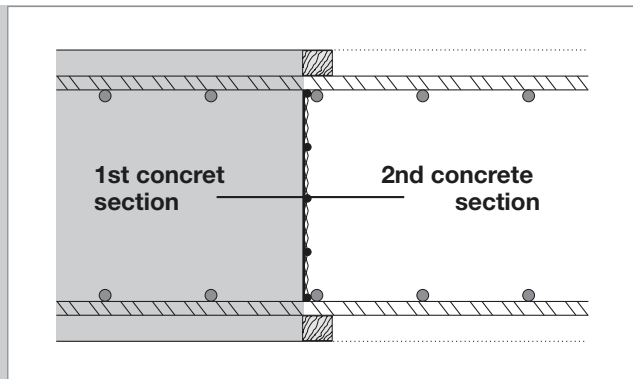
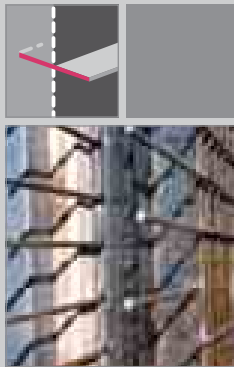
Joining plate:

2 mm or 1.5 mm thick, 200, 250, 300 mm wide or made to order.

The metal waterstop can be angled upwards by 15° on both sides.

These elements are also available as type 4015 with factory made stiffening.

Distance = Height of element



**Stremaform Type 3025** Working joint stop end with indented joints and metal water bar

The number of indented joints is to order.

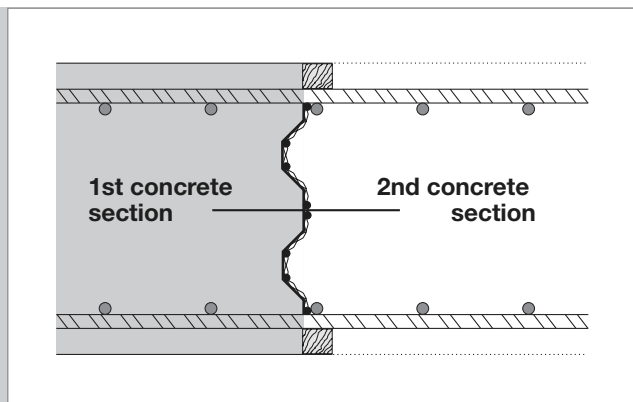
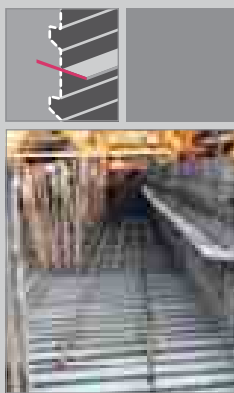
Standard indented joints (see type 3010) or made to plan.

Joint sheet metal: 2 mm (standard) or 1.5 mm thick, 200, 250, 300 mm wide or made to order.

The metal waterstop can be angled upwards by 15° on both sides.

These elements are also available as type 4025 with factory made stiffening.

Distance = Height of element



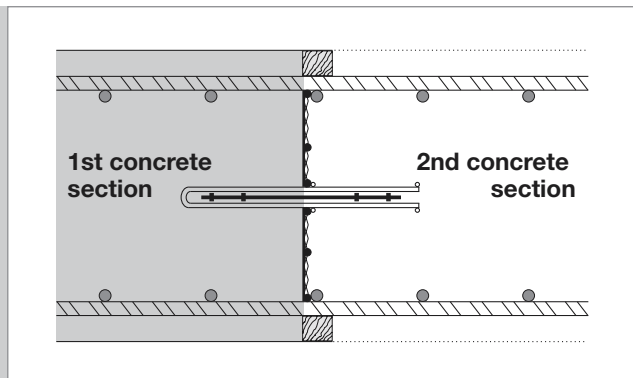
**Stremaform Type 3030** Working joint stop end with rubber water bar cage

To take a rubber water bar 200, 250, 300 mm wide or made to order.

The rubber water bar can be angled upwards by 15° on both sides.

These elements are also available as type 4030 with a factory made stiffening.

Distance = Height of element



**Stremaform Type 3040** Working joint stop end with indented joints and rubber water bar cage

The number of indented joints is to order.

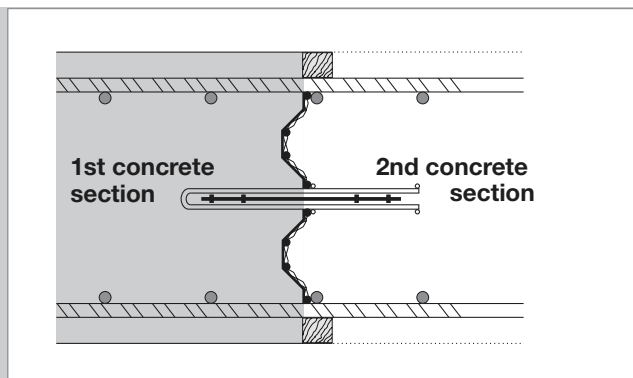
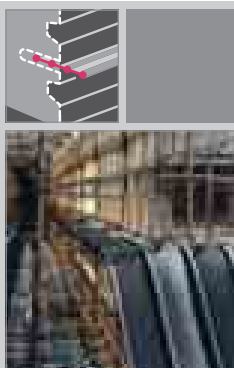
Standard indented joints (see type 3010) or made to plan.

To take a rubber water bar 200, 250, 300 mm wide or made to order.

The rubber water bar can be angled upwards by 15° on both sides.

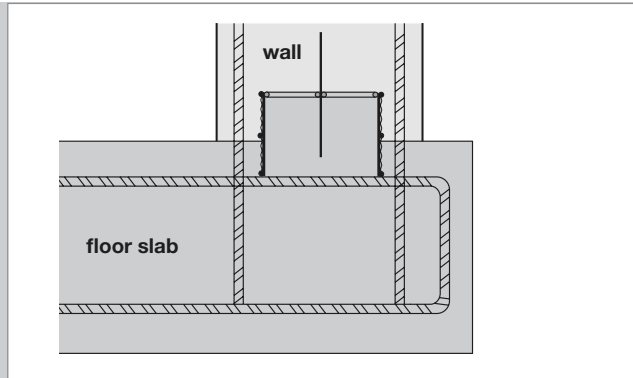
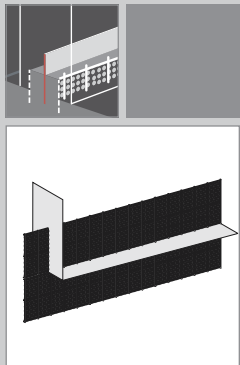
These elements are also available as type 4040 with a factory-made stiffening.

Distance = Height of element



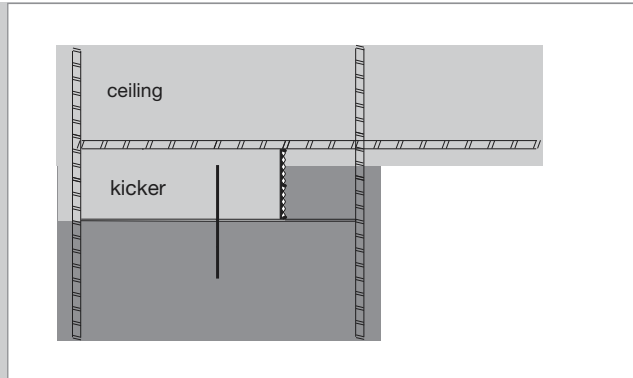
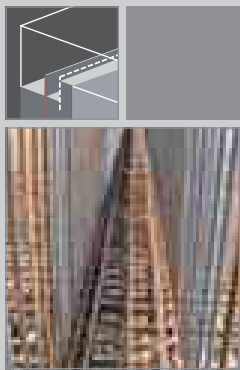
**Stremaform Type 3050** Working joint stop end with metal water bar to form a kicker between slab and wall

The formwork can also be supplied as a single sided design (inner side).  
 Jointing plate:  
 2 mm (standard) or 1.5 mm thick, 200, 250, 300 mm wide or made to order.  
 Elements are made to measure  
 Distance = Height of element  
 Transitional element for slab formwork elements in the joint between slab/wall



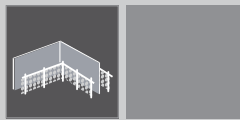
**Stremaform Type 30501** Kicker for wall / ceiling

Kickers for wall / ceiling are generally single sided to ensure that the expansion joint on the inner wall side is level with the lower ceiling edge.

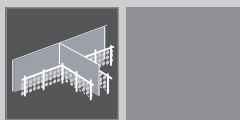


**Stremaform Type 3050** Working joint stop ends to special designs

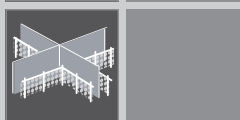
**Corner element**



**T- element**



**Crossing element**

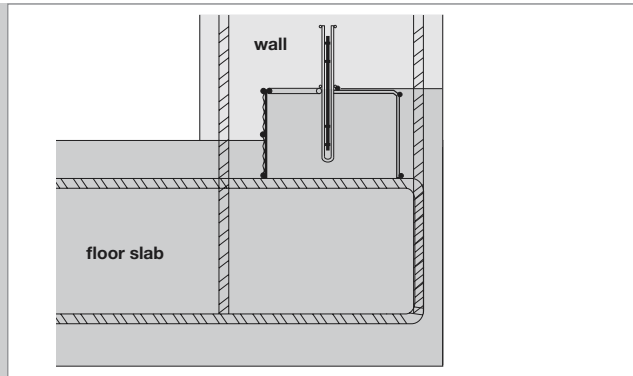
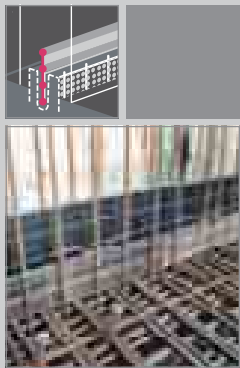


Radii are produced in our factory.



**Stremaform Type 3060** Working joint stop end with rubber water bar cage to form a kicker between slab and wall

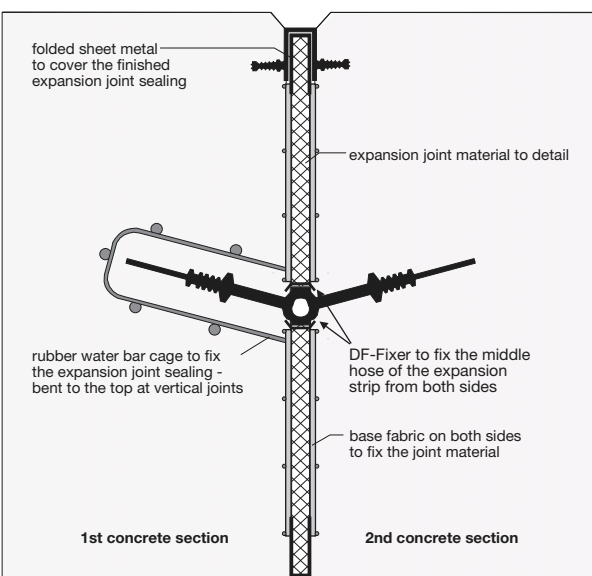
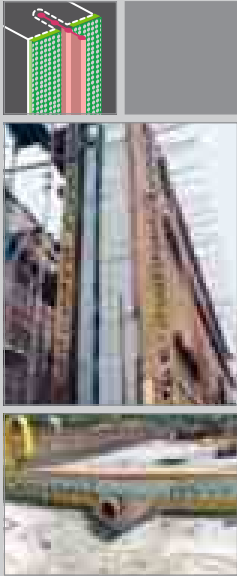
To take a rubber water bar 200, 250, 300 mm wide or made to order.  
 Elements are made to measure.  
 Distance = Height of element  
 The kicker can be supplied with single sided or double sided formwork.



**Stremaform Type 5430** Working joint stop ends for expansion joints

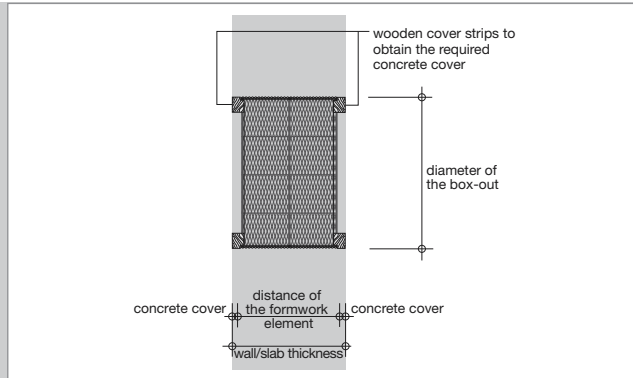
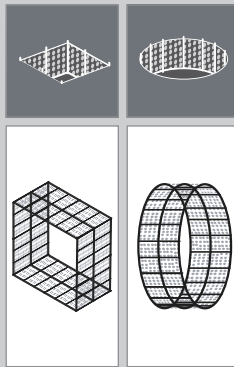
With rubber water bar cage one sided and expansion joint – materials to be detailed

Distance = Height of element



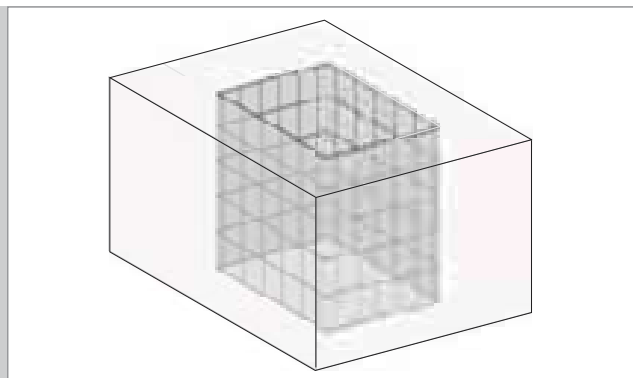
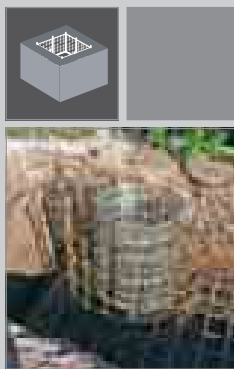
**Stremaform Type 3070 square and 3090 circular**

With and without additional factory-made stiffening.  
 With wooden cover, single or double sided.  
 Elements are made to measure.  
 Distance = Height of element



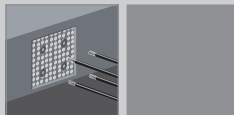
**Stremaform Type 3070 square and 3090 circular**

With and without additional factory-made stiffening.  
 With wooden cover, single or double sided.  
 Elements are made to measure.  
 Distance = Height of element  
 The test report confirms that the shear strength in the cast joint is 37% higher than using a traditional indentation joint to DIN 1045 – indented joint.



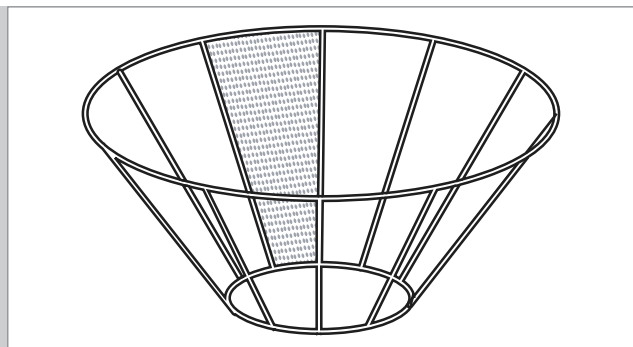
**Stremaform box-out in a diaphragm wall for subsequent connection to a slab or wall**

Consisting of:  
 Stremaform element adapted to incorporate couplers on site,  
 Flat sheet steel used for edge formwork, covering the complete circumference (box-out depth),  
 Sheet steel cover, bent on edge on one side; on three sides the steel plate is coming off the box-out, with welded on round steel bars.  
 The box-out is fixed to the reinforcement cage by welding to the rebars on site.  
 Elements are made to measure  
 Distance = Height of element



**Stremaform Type 3000 or 4000 „strong“ Sheet material for hoppers or angled formwork**

Fixing at the bottom via anchors / lift protectors prevents the risk of disturbing reinforcement in the work area.  
 The surface is covered with screed to the required concrete cover.  
 The lower and upper diameters and the vertical hopper height are necessary for orders.





Main Railway Terminus („Lehrter Bahnhof“, Berlin)



Pump storage, Goldisthal, Thüringen

Mitterweg 1  
94339 Leiblfing · Germany  
Phone +49 (0) 94 27 / 1 89-0 · Fax +49 (0) 94 27 / 15 88  
info@maxfrank.com  
www.maxfrank.com



**PECA-Verbundtechnik GmbH**

Industriestraße 4-8  
96332 Pressig  
Germany  
Phone +49(0)92 65/951 -0  
Fax +49(0)92 65/951 -20  
www.peca.de  
info@peca.de

**Frank Slovakia, S.r.o.**

ul. J. Haška 1  
94901 Nitra  
Slovakia  
Phone +421 (0)37/6522885  
Fax +421 (0)37/6554133  
www.sk.maxfrank.com  
info@sk.maxfrank.com

**Max Frank Limited**

Whittle Road, Meir  
Stoke-on-Trent, ST3 7HF  
United Kingdom  
Phone +44(0)1782 598041  
Fax +44(0)1782 315056  
www.maxfrank.co.uk  
info@maxfrank.co.uk

**Max Frank Nederland bv**

Rootven 6  
5531 MB Bladel  
Netherlands  
Phone +31(0)497 383538  
Fax +31(0)497 384820  
www.maxfrank.nl  
info@maxfrank.nl

**EGCO AG**

Industriestrasse 100  
3178 Bössingen  
Switzerland  
Phone +41 (0)31/7 40 55 55  
Fax +41 (0)31/7 40 55 56  
www.egco.ch  
info@egco.ch

**Max Frank Oddział  
w Polsce**

ul. Łopuszańska 36  
02-220 Warszawa  
Poland  
Phone +48(0)22/5 77 05 81  
Fax +48(0)22/8 46 27 37  
www.pl.maxfrank.com  
info@pl.maxfrank.com

**Max Frank (Canada) Ltd.**

49 Maplecrest Lane  
Brantford, Ontario N3R 7TG  
Canada  
Phone +1-519-759-3854  
Fax +1-519-759-3854  
www.ca.maxfrank.com  
info@ca.maxfrank.com

**Max Frank GesmbH**

Weinburg/Waasen  
3200 Obergrafendorf  
Austria  
Phone +43(0)27 47/23 78 -0  
Fax +43(0)27 47/23 78 85  
www.maxfrank.at  
info@maxfrank.at

**Max Frank Kft.**

Malomkő utca 7,  
A lépcsőház 2. emelet  
2040 Budaörs  
Hungary  
Phone +36 23 500 182  
Fax +36 23 500 183  
www.hu.maxfrank.com  
info@hu.maxfrank.com

**Max Frank Middle East**

P.O.Box 121430  
Dubai  
UAE  
Phone +971 4 609 17 00  
Fax +971 4 609 17 01  
www.ae.maxfrank.com  
info@ae.maxfrank.com

**Frank Italy S.r.l.**

Zona Industriale Molini 6  
39032 Campo Tures  
Italy  
Phone +39(0)4 74 / 65 90 08  
Fax +39(0)4 74 / 65 90 18  
www.frank-italy.com  
info@frank-italy.com

**Max Frank Ukraine**

Luteranska 16, Office 9  
01024 Kiev  
Ukraine  
Phone +380 44 2 79 79 61  
Fax +380 44 2 79 79 61  
www.ua.maxfrank.com  
info@ua.maxfrank.com

**Max Frank Pte Ltd**

222 Tagore Lane  
#01-01, TG Building  
Singapore 787603  
Phone +65 6451 7063  
Fax +65 6451 4008  
www.sg.maxfrank.com  
info@sg.maxfrank.com

